

**STYRIA  
ARHITEKTURA**

**T** +386 /2/ 228 29 88  
**F** +386 /2/ 228 29 89  
**E** INFO@STYRIA.SI

**STYRIA ARHITEKTURA D.O.O.**  
CANKARJEVA ULICA 6E / SI-2000 MARIBOR  
**WWW.STYRIA.SI**

## VINARJE VILLAGE

**Datum:** oktober 2019

**Faza:** IDZ

**Lokacija:** Vinarje, 2000 Maribor

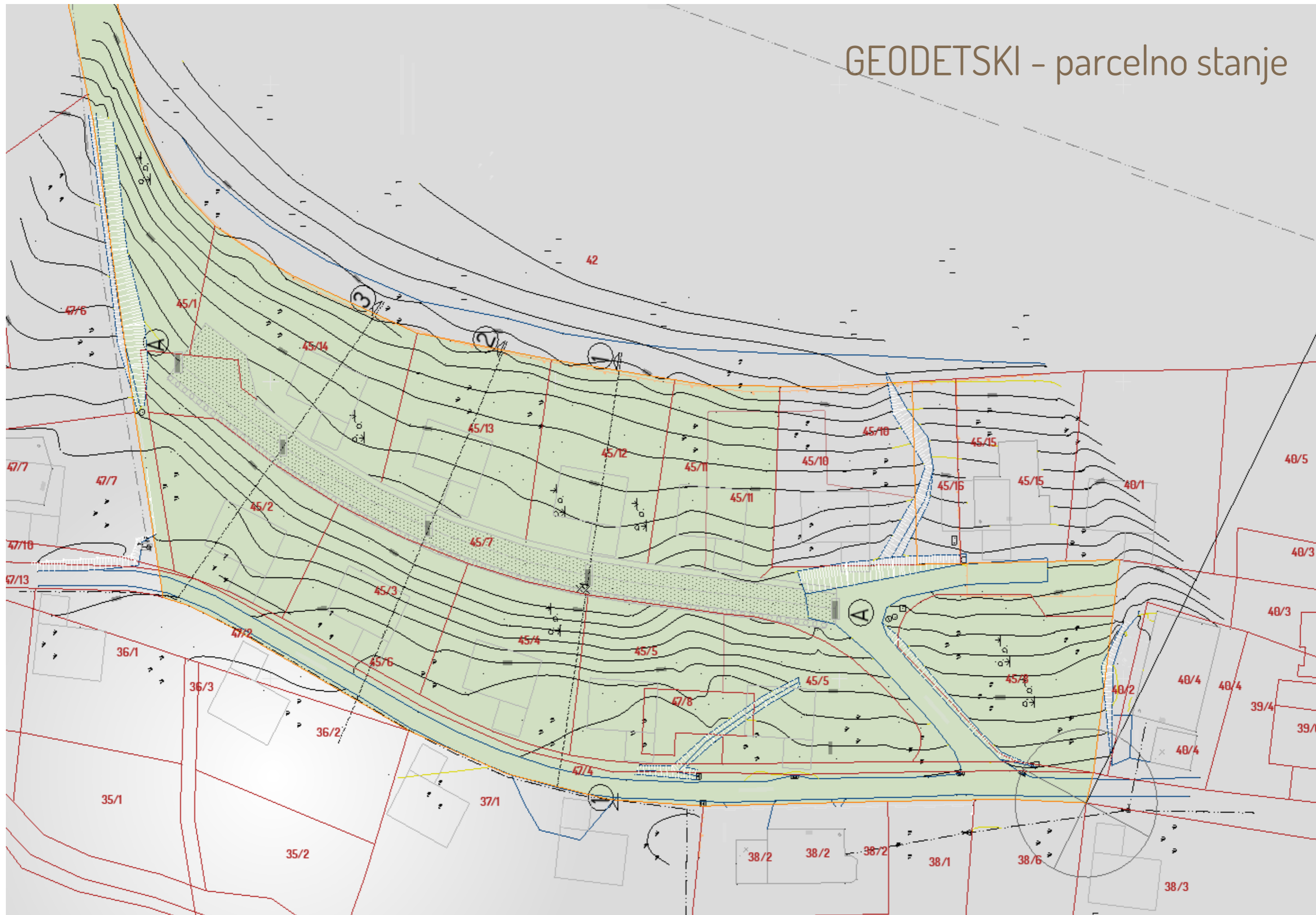
**Avtorji:** **David Mišič mag. arch.** - arhitekt  
**Davor Fistrič dipl. inž. arh. (UNI)** - arhitekt  
**Sašo Žolek mag. arh.** - arhitekt

## KAZALO

---

|     |                        |       |
|-----|------------------------|-------|
| .1  | Naslovnica             |       |
| .2  | Kazalo                 |       |
| .3  | Območje obdelave_širše |       |
| .4  | Območje bodelave_ožje  |       |
| .5  | Ureditvena situacija   | 1:500 |
| .6  | Prerez A 1             | 1:200 |
| .7  | Prerez A 2             | 1:200 |
| .8  | Prerez A 3             | 1:200 |
| .9  | Prerez A 4             | 1:200 |
| .10 | Prerez B 1             | 1:200 |
| .11 | Prerez B 2             | 1:200 |
| .12 | 3D POGLEDI             |       |

# GEODETSKI - parcelno stanje







OBMOČJE OBDELAVE

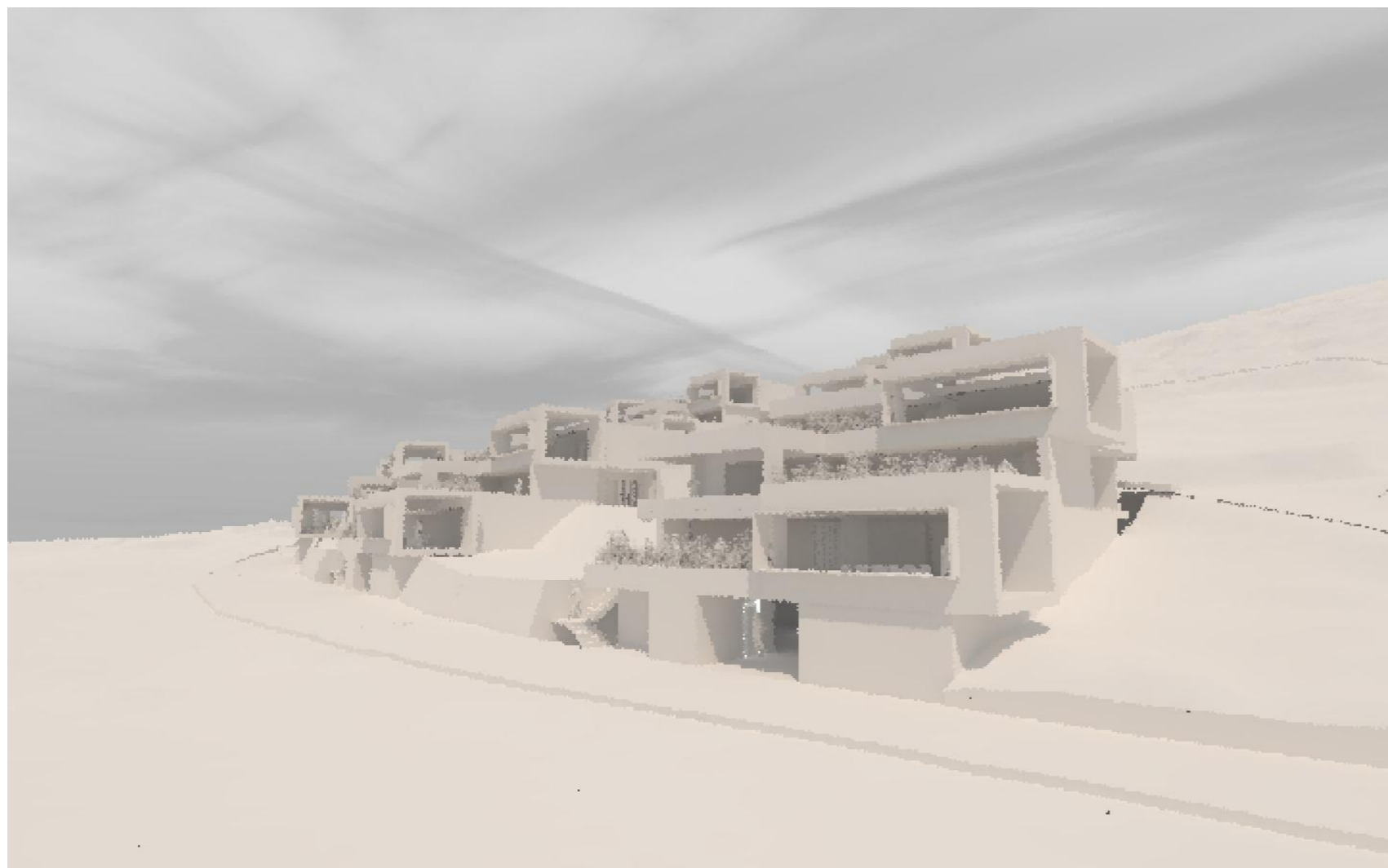
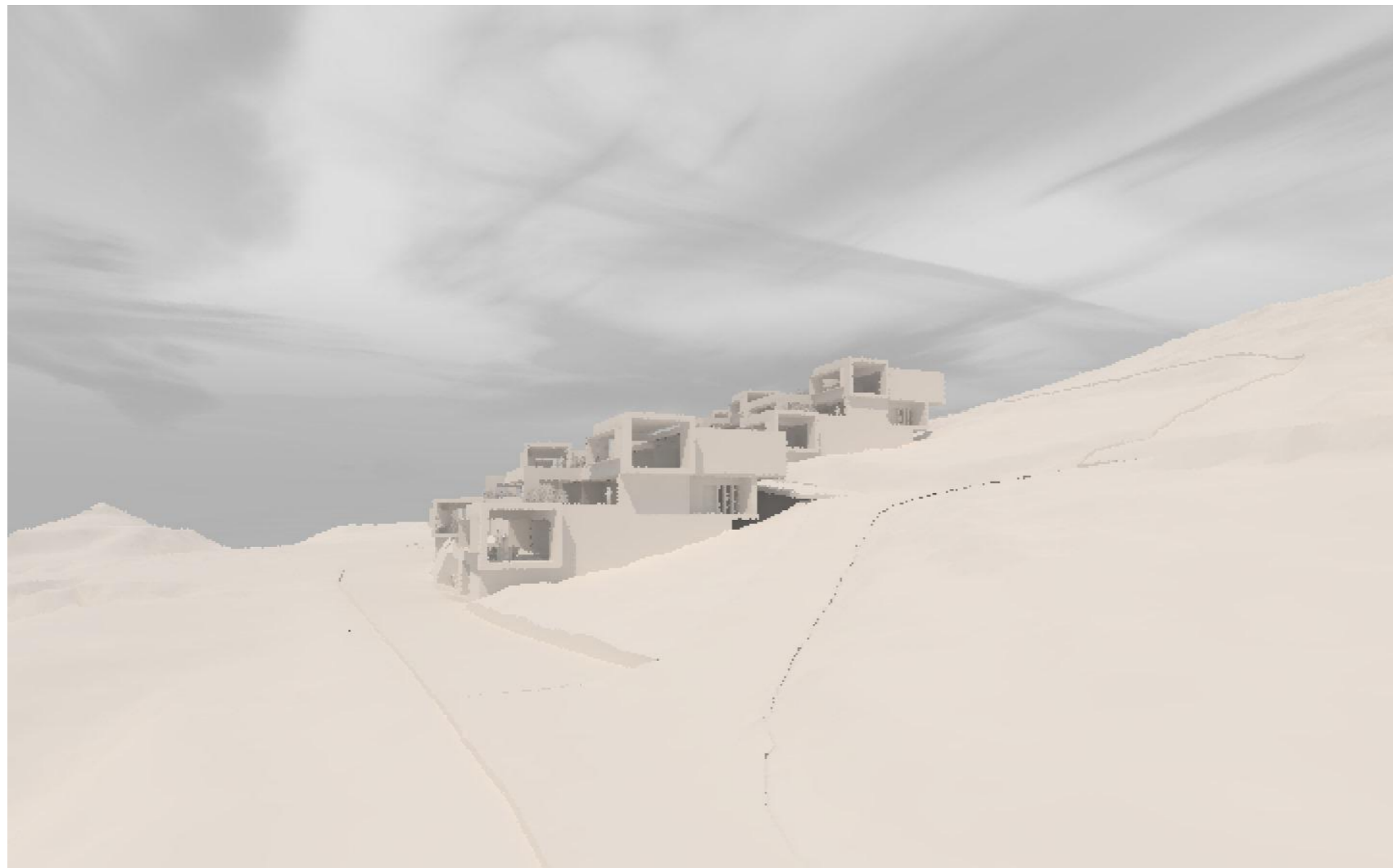
CESTA V VINARJE

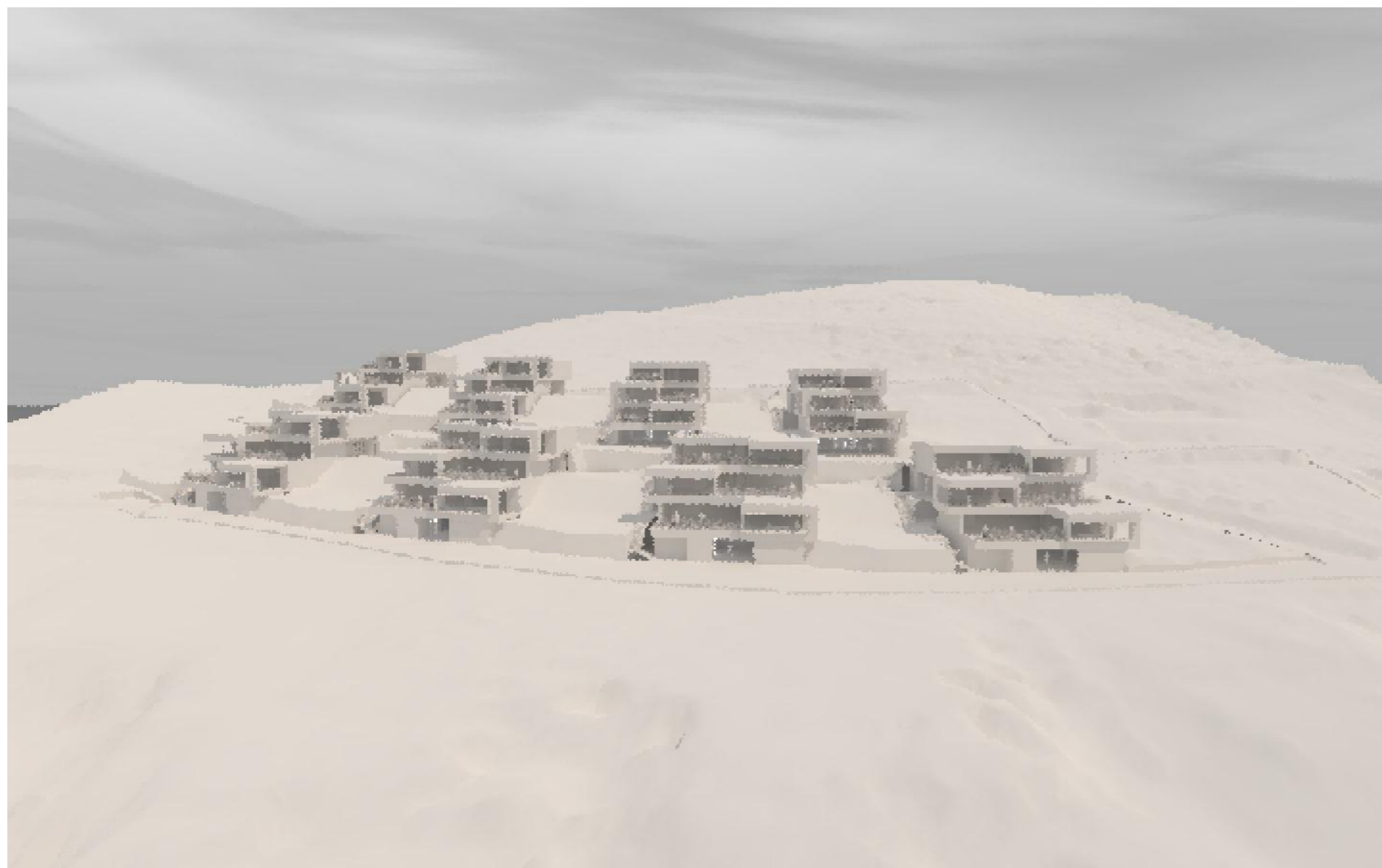
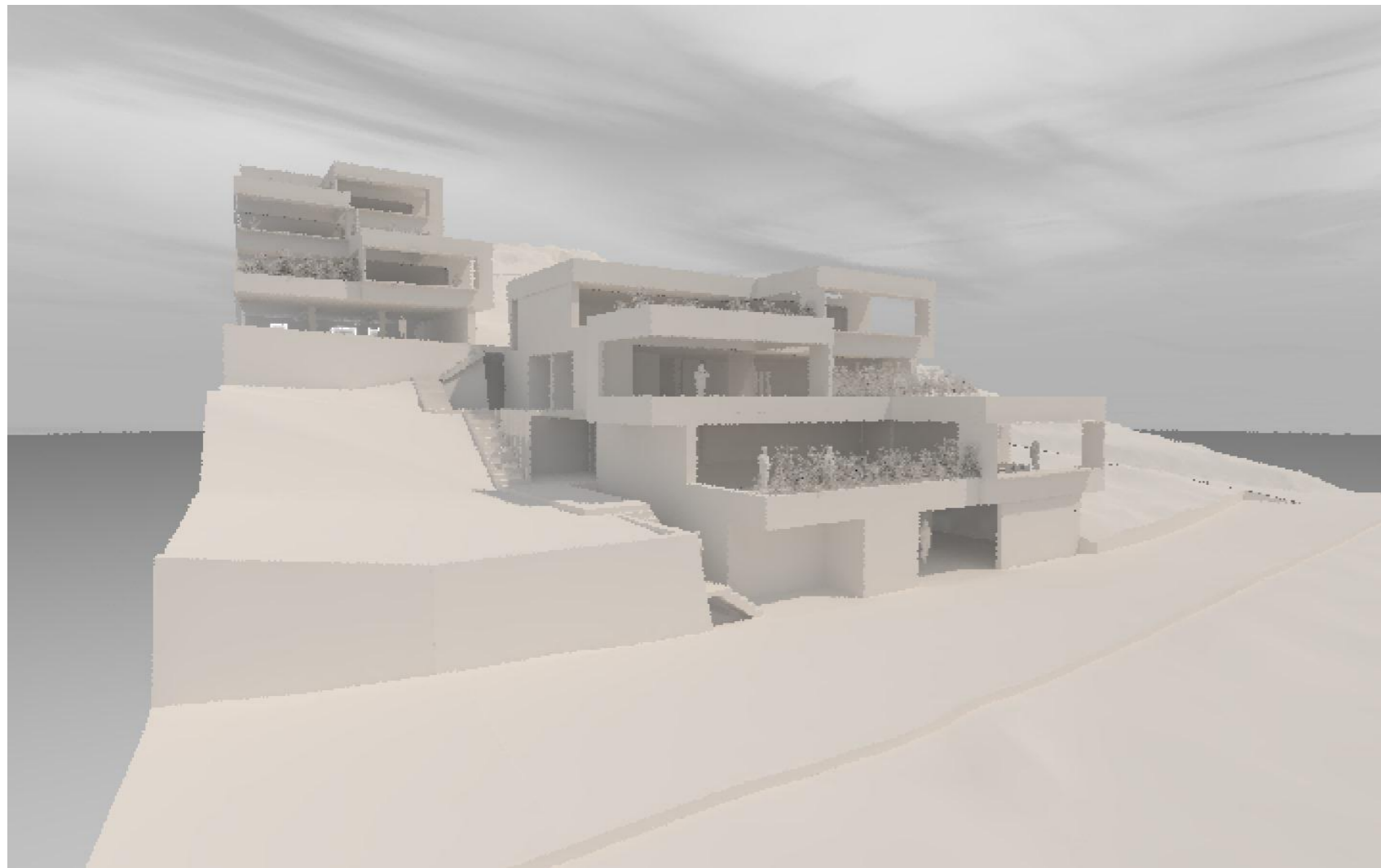
DVOREC RAČJI DVOR

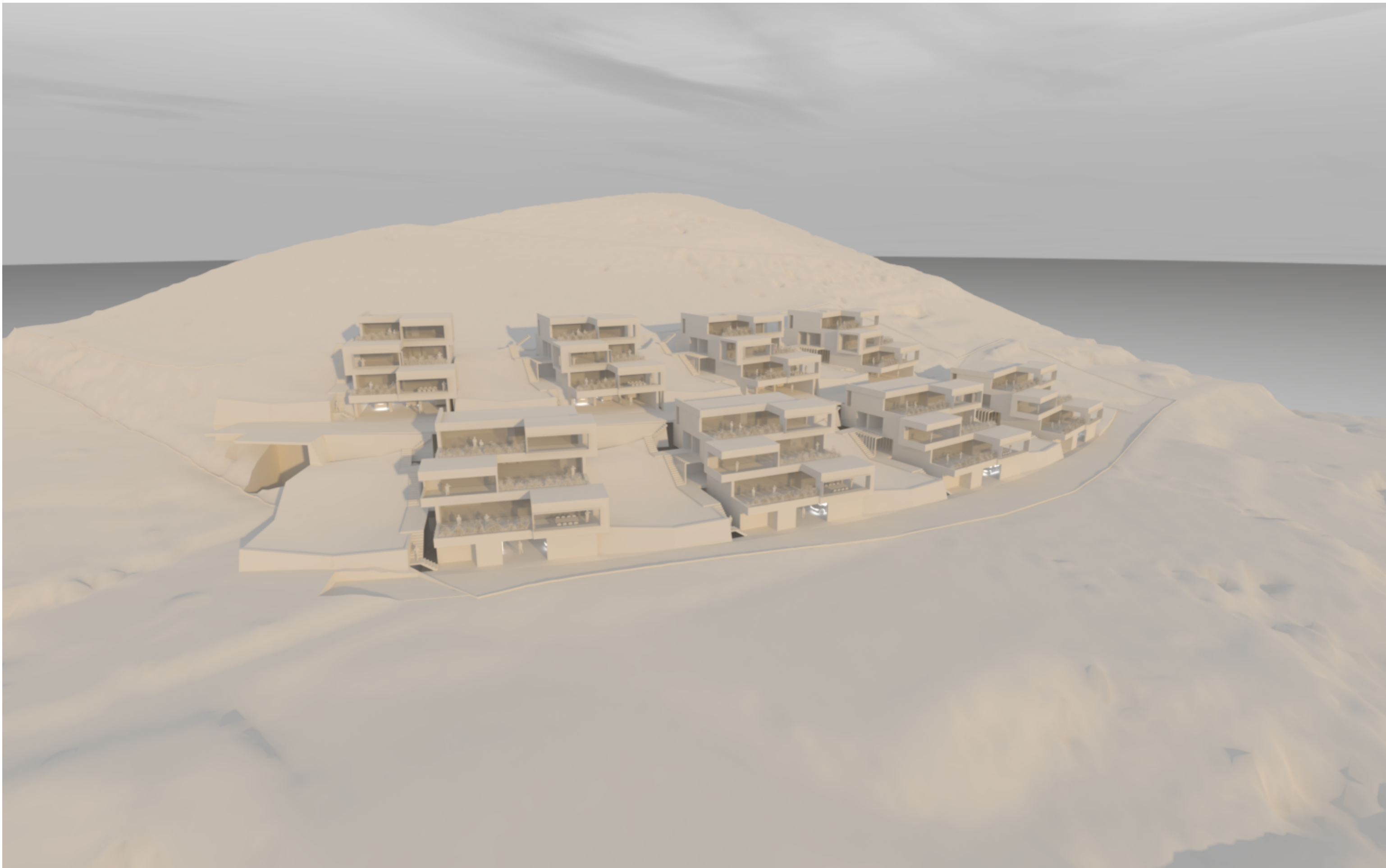
HIPODROM - KAMNICA

STOPNICE NA KALVARIJO

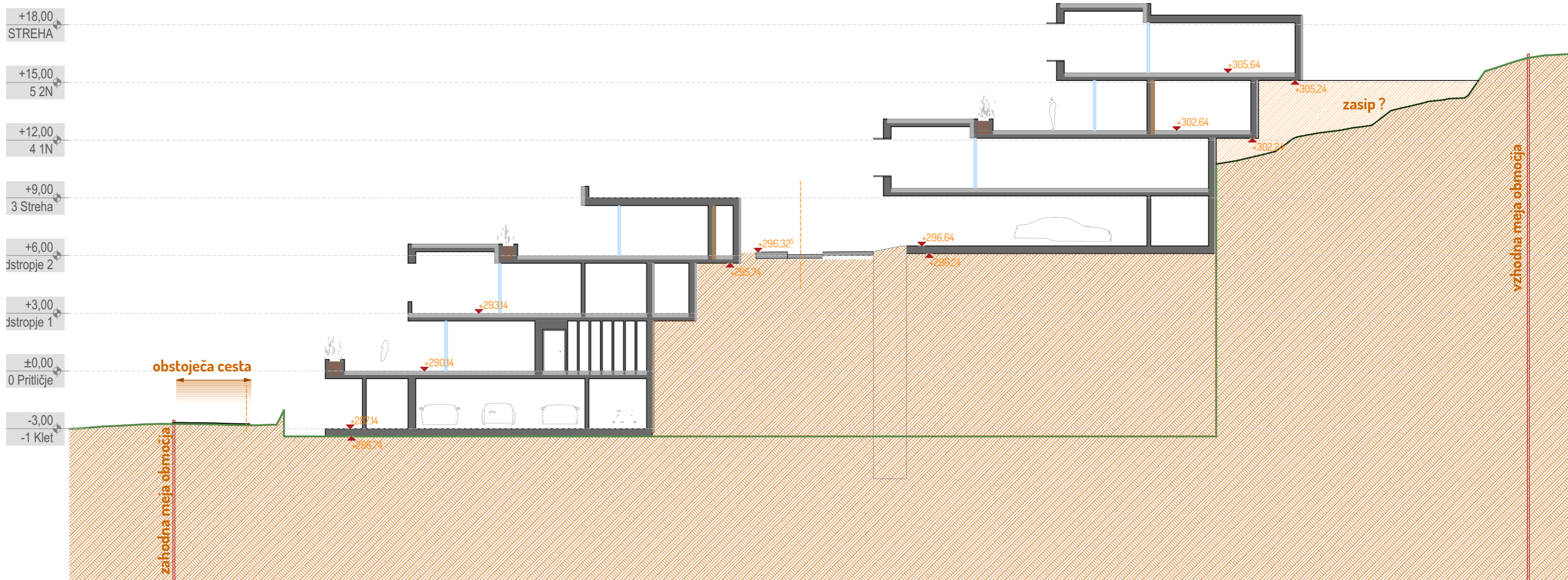




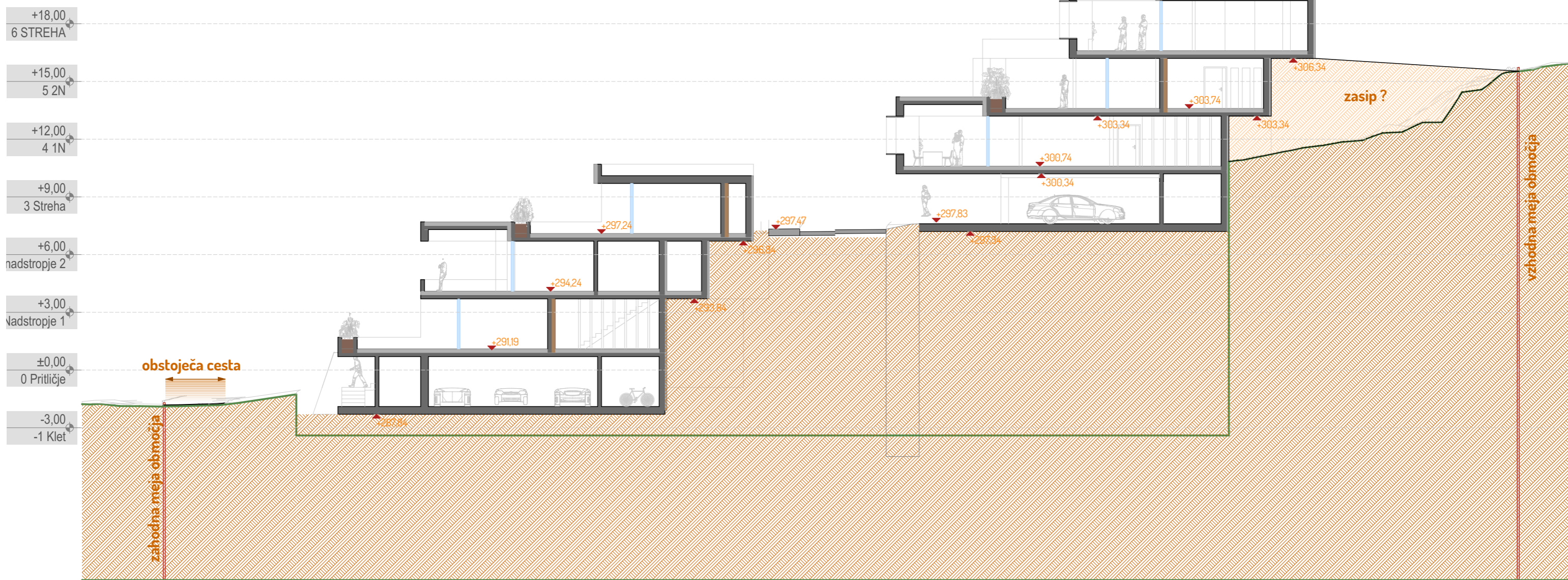


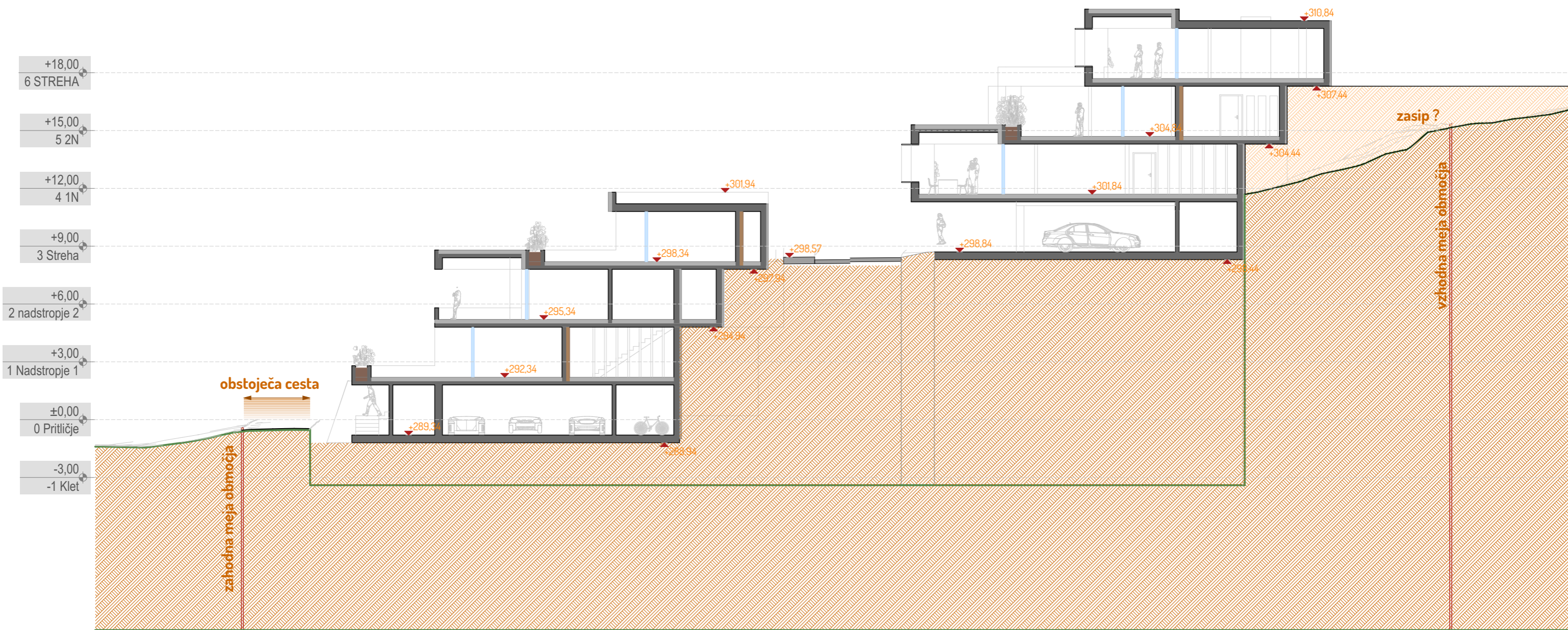




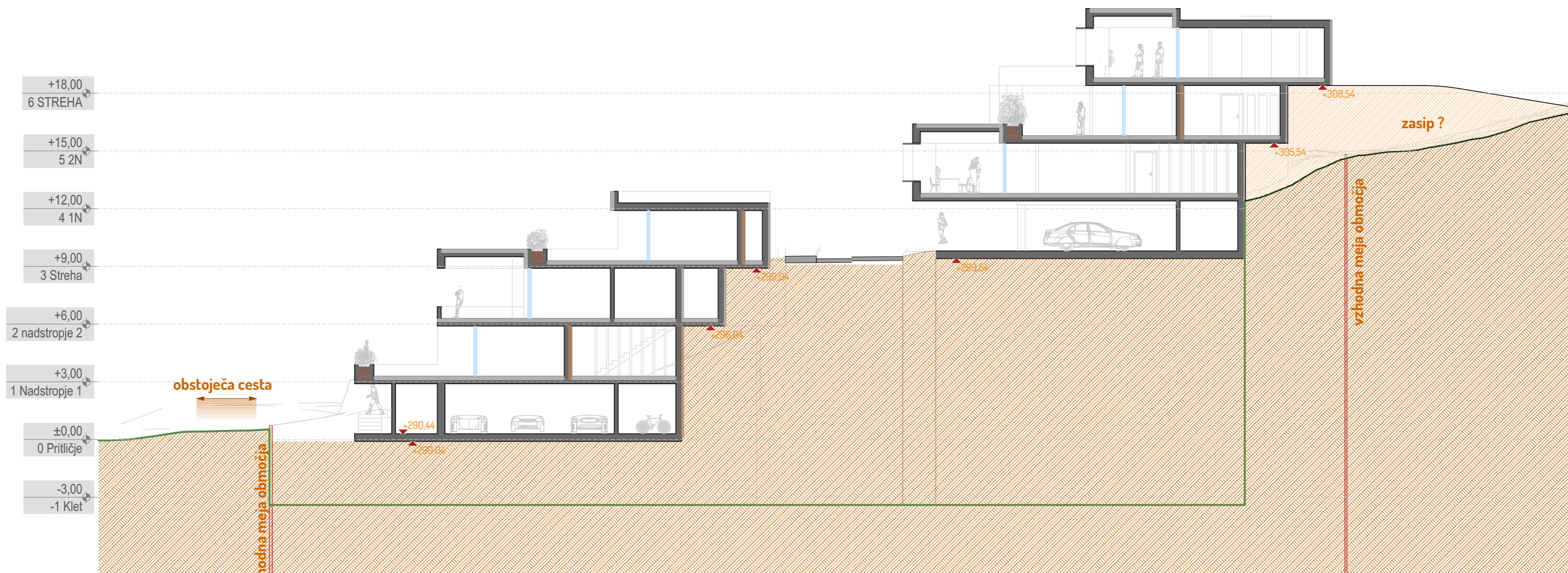




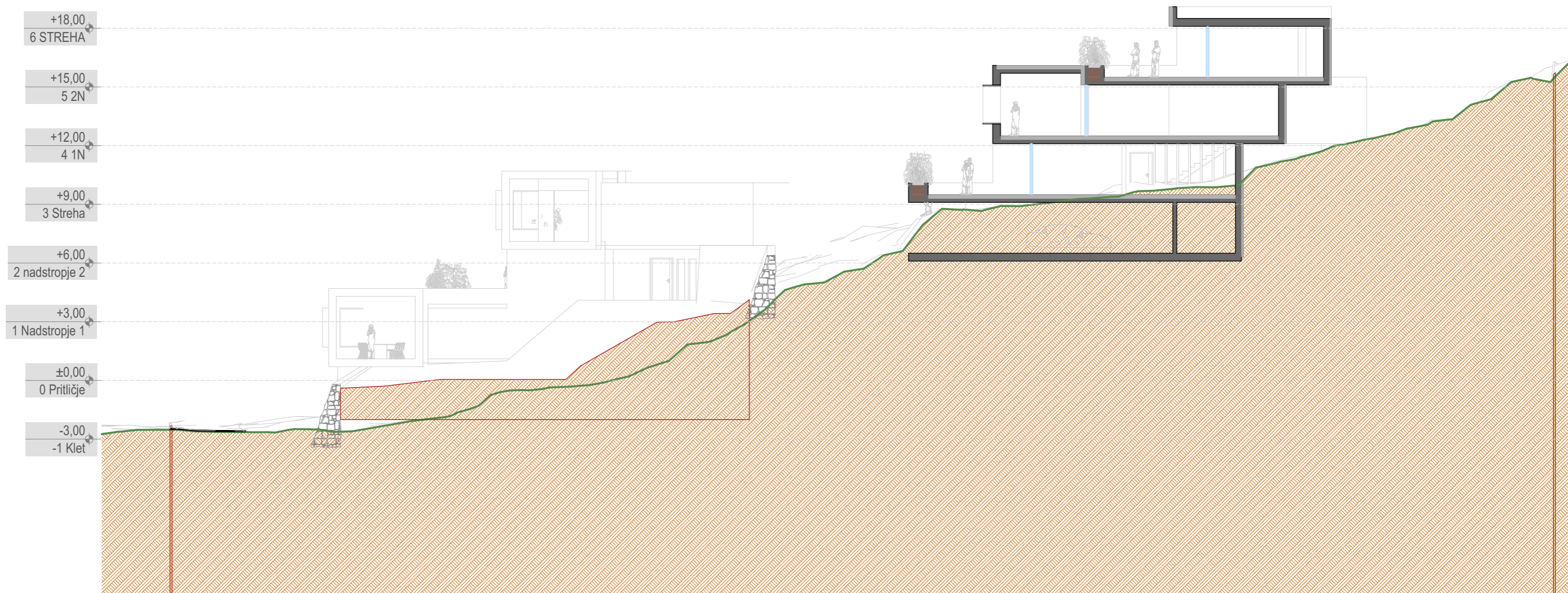


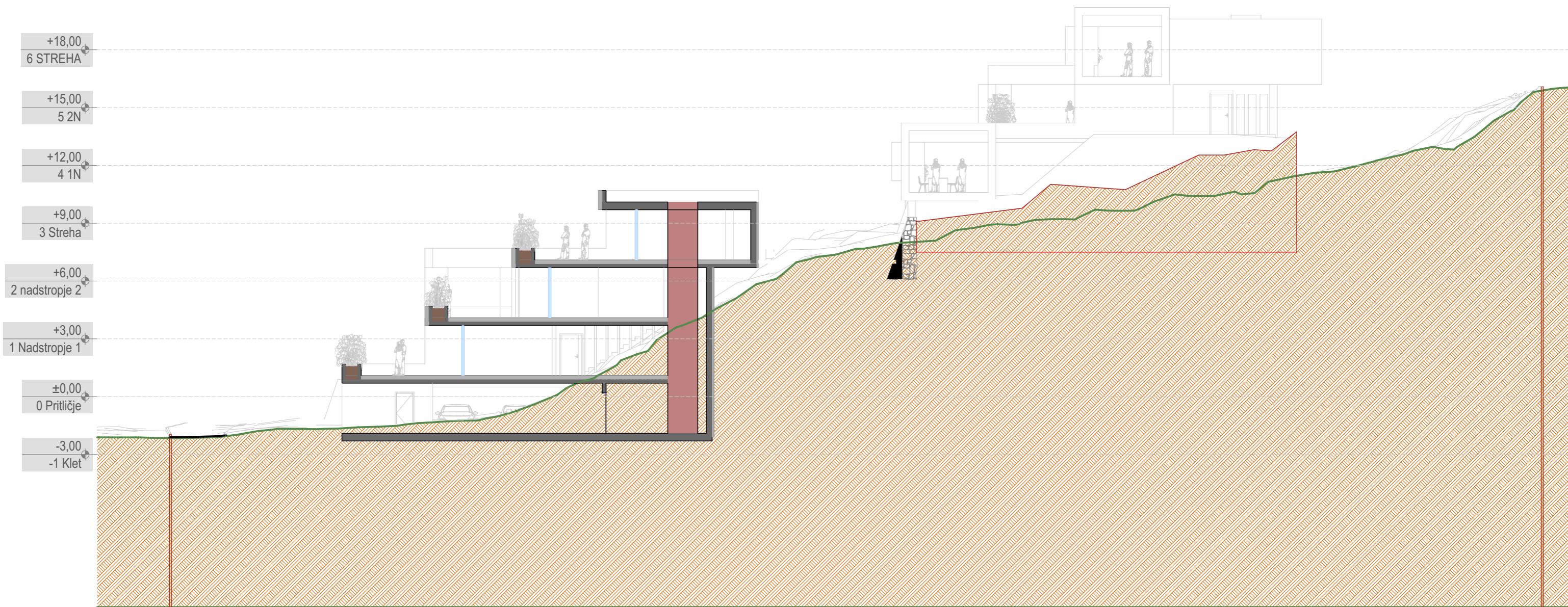












+18,00  
6 STREHA

+15,00  
5 2N

+12,00  
4 1N

+9,00  
3 Streha

+6,00  
2 nadstropje 2

+3,00  
1 Nadstropje 1

±0,00  
0 Pritličje

-3,00  
-1 Klet